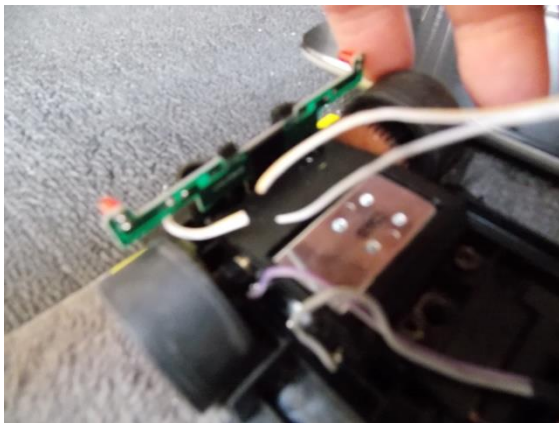


Replacing Front and Rear Lights on 1/32 and 1/24 Scale Digital Cars

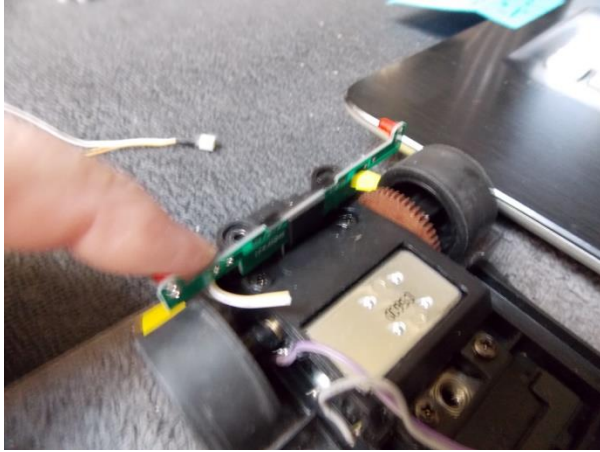
STEP 1: Unplug Quick Connect Wire



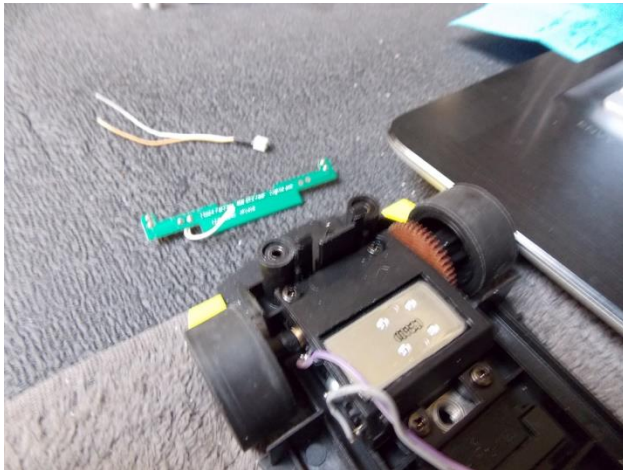
STEP 2: Cut wire as close to Rear Board as possible.



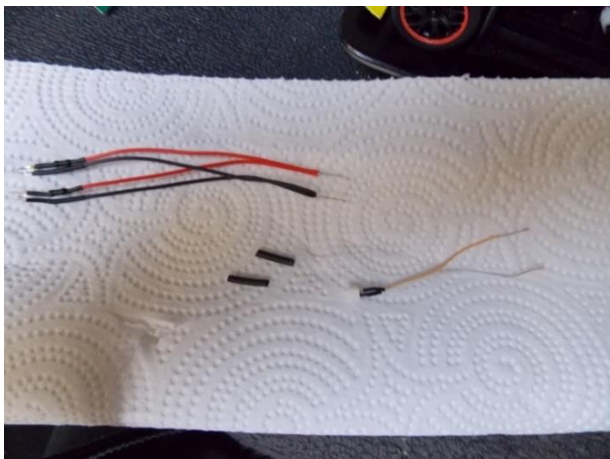
STEP 3: Set aside the quick connect wire and remove rear light board by pulling it up out of car.



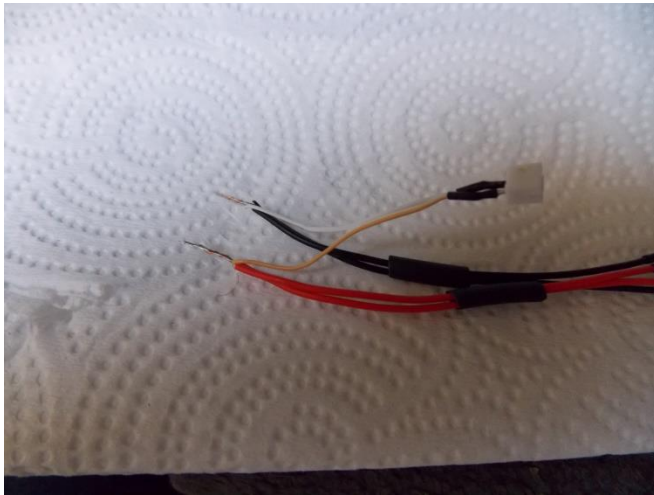
Now your car should look like this with the parts layout as shown.



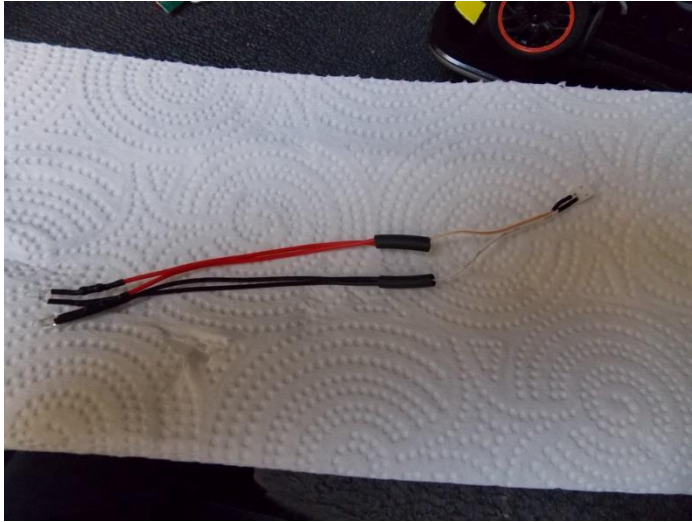
STEP 4: Remove the rear tail lights from the bag along with the 2 pcs of heat shrink tubing and locate the quick connect you cut off in step 2.



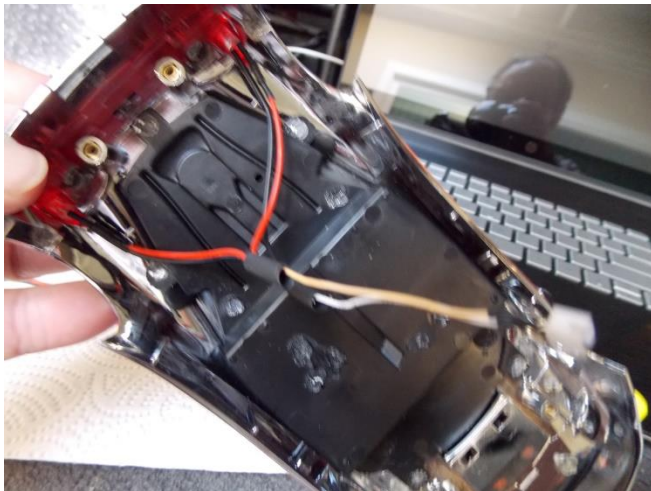
STEP 5: Use caution and strip the wires on the quick connect about ¼ inch and attach the quick connect to the new LED Lights making sure you connect the Yellow wire on the quick connect to the Red wire of the new Led lights, cross wires as if making an "X" and then twist tightly, bend your twist back straight and then slide the two pcs of heat shrink tubing over the connections and heat until it has shrunk (You can use a lighter if a heat gun is not available)



Your wires should now look like picture below.



STEP 6: Now take the car body and turn it upside down. For this step you should have some E6000 Clear Adhesive or Supper Glue in the corners near the tail lights as you can see in the picture below. You will want to put enough adhesive to cover the bottom of the Led light (it will not hurt the light) do only one at a time. Next, set one Led light in place into the adhesive or super glue and hold until you can let go and the Led light will not move. You can use a piece of tape to temporarily hold the Led light in place if necessary. Repeat, step 6 for the other tail light.

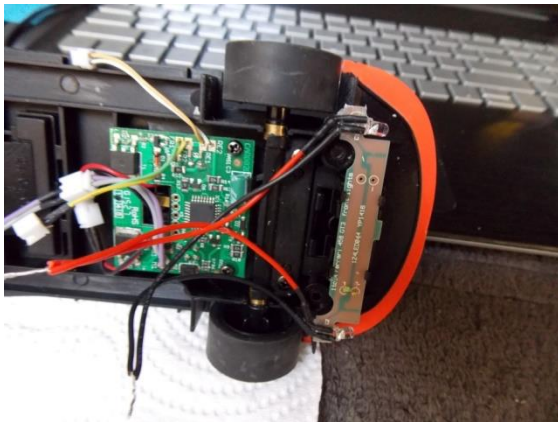


IF YOU ARE NOT DOING FONT HEADLIGHTS SKIP TO STEP 8

STEP 7: Locate the front headlight board, unplug the quick connect wire from main board. Next cut the wires off of the light board (as close as possible to the board). Next look at the front board and you will see two little bulbs, bend them back and forth until they break off and the board is now clean. Remove your new Led lights from the package, you will see that they are bent in a way to get around the wheels (If you need to bend them a little more you can do so)

Now connect the quick connect wire and the New Led lights together the same way you connected the rear light wires in STEP 5 above.

Next, apply your adhesive or glue to the end of the board as shown in picture below (one at a time) then apply the Led Light with the correct bend to the board, hold it or use tape to hold in place until it does not move, now repeat for the other side. Let the adhesive or glue hardened so the Led light will not move.



Step 8:

This is the final step. Make sure all adhesive or glue has hardened and that all of your quick connects are back together. Make sure your wires are tucked inside of the car close to the body where they will not be pinched. Put the body back on the car and tighten your chassis screws.

